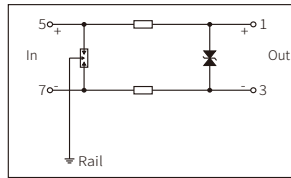


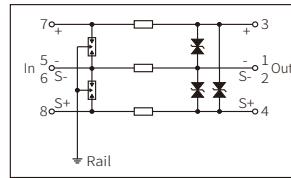
Features

- 12.5mm width
- Pluggable protection module
- Ground via DIN 35mm rail

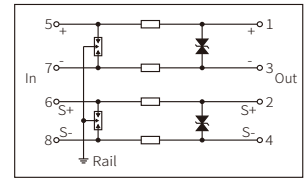
T-24-EX-L



T-24-EX-L3

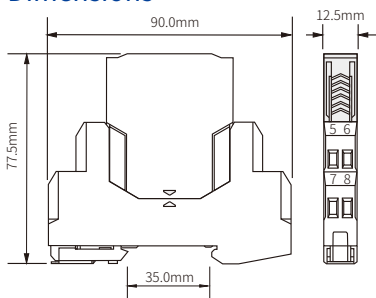


T-24-EX-L4



Technical data	2-wire	3-wire	4-wire
Max. continuous operating voltage U_c	32V DC	32V DC	32V DC
Nominal operating current I_n	500mA	500mA	500mA
Resistance(per line)	1Ω	1Ω	1Ω
Nominal discharge current $I_n(8/20\mu s)$	10kA	10kA	10kA
Max. discharge current $I_{max}(8/20\mu s)$	20kA	20kA	20kA
Impulse current $I_{imp}(10/350\mu s)$	2.5kA	2.5kA	2.5kA
Voltage protection level $U_p(8/20\mu s)$ L-L/L-G	60V/600V	60V/600V	60V/600V
Voltage protection level $U_p(1kV/\mu s)$ L-L/L-G	40V/600V	40V/600V	40V/600V
Bandwidth(-0.5dB)	40MHz	40MHz	40MHz
Response time	1ns	1ns	1ns
Residual current I_{PE}	<1μA	<1μA	<1μA
Housing protection grade(IEC60529)	IP 20	IP 20	IP 20
Housing material/Flammability rating(UL94)	PA66/V0	PA66/V0	PA66/V0
Testing standard	GB/T 18802.21/IEC 61643-21	GB/T 18802.21/IEC 61643-21	GB/T 18802.21/IEC 61643-21
Certification			
Ex marking	II 1G Ex ia IIC T6...T4 Ga	II 1G Ex ia IIC T6...T4 Ga	II 1G Ex ia IIC T6...T4 Ga
Certificate Number	Sira 20ATEX2010X IECEX SIR 20.0018X	Sira 20ATEX2010X IECEX SIR 20.0018X	Sira 20ATEX2010X IECEX SIR 20.0018X
Entity Parameters	$U_i=30V; I_i=500mA; P_i=5.32W;$ $C_i \approx 0\mu F; L_i \approx 0mH$	$U_i=30V; I_i=500mA; P_i=5.32W;$ $C_i \approx 0\mu F; L_i \approx 0mH$	$U_i=32V; I_i=500mA; P_i=5.32W;$ $C_i \approx 0\mu F; L_i \approx 0mH$
Functional safety certification	SIL3	SIL3	SIL3
Type test	Shanghai Lightning Protection Center	Shanghai Lightning Protection Center	Shanghai Lightning Protection Center
Order number	7096962	7097610	7040569

Dimensions



Typical applications

